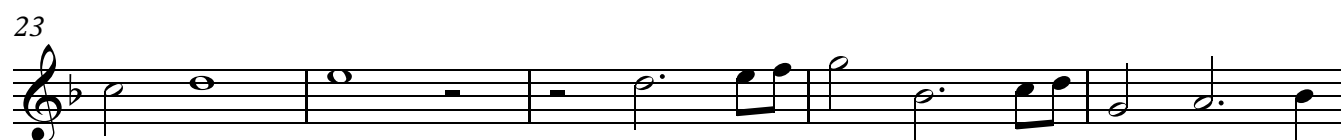
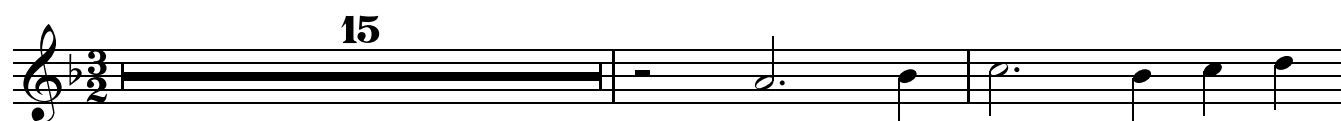


Violin II

# Jauchzet dem Herren

Christoph Bernhard



[illegible]

65

65

70 **2**




76

Measure 76: Treble clef, key signature of one flat. The melody consists of eighth and sixteenth notes, with a repeat sign at the end.

81 **3**

[illegible]


91 **14**



107

107

111



116

Musical notation for measure 116, featuring a treble clef, a key signature of one flat (B-flat), and a 4/4 time signature. The melody consists of eighth and quarter notes, with rests, ending with a whole rest.

